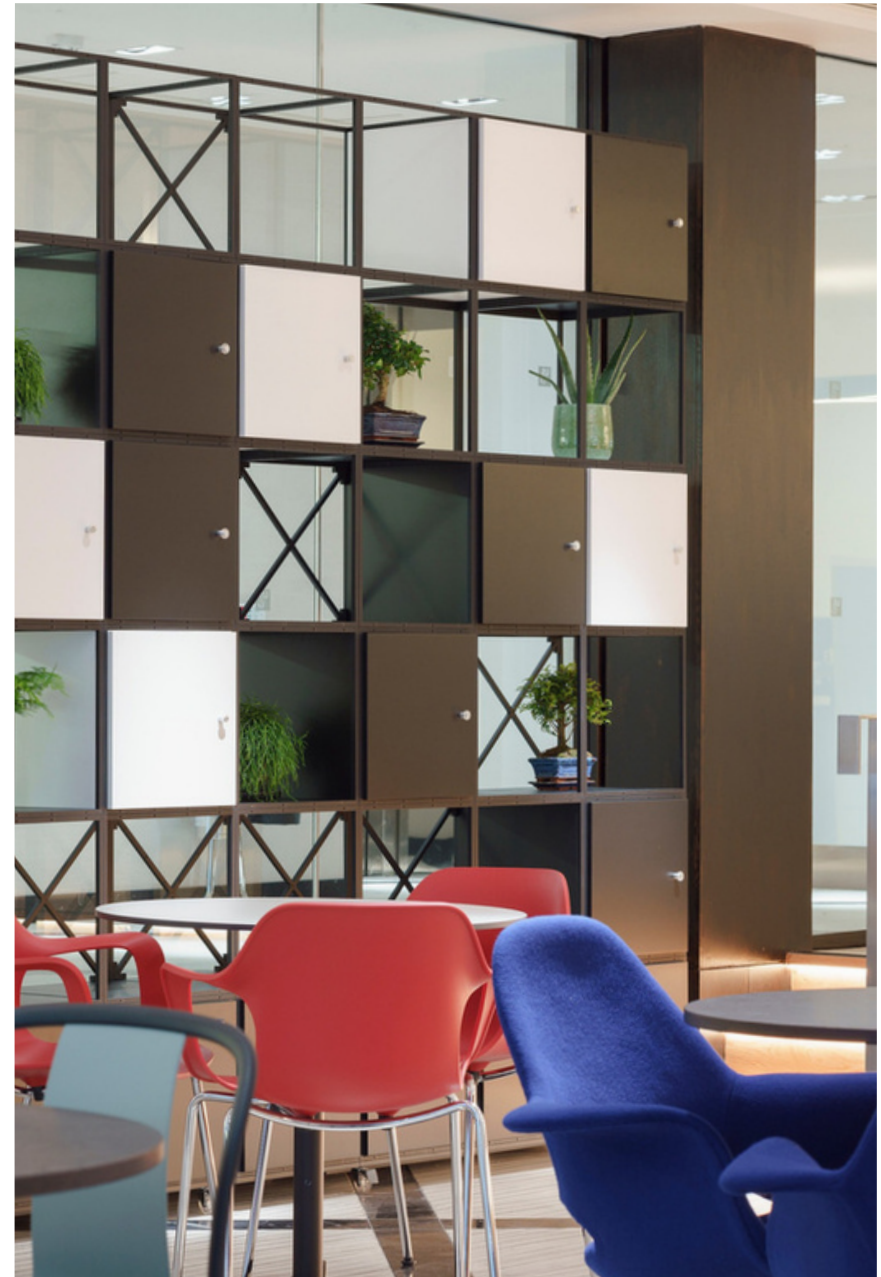


Professional, shared working environment St Stephen's Green, Dublin



Welcome to Viridis Offices

Preparing for networking & corporate events, company parties and other social gatherings. We have stunning, flexible spaces for large gatherings, complete with a fully equipped professional kitchen offering a wide range of catering options. Whether you're planning a summer party or looking for the ideal office Christmas party venue, our unique event space will be on hand to deliver. Simply let us know the proposed date, rough number of guests and a little more information about the event.



Ground Floor Club Space

5 School House Lane East, Dublin

Event Space Capacity: 30 seated, 50 standing.

On the ground floor of our building is our event space, with its striking copper bar and relaxed style seating it offers a flexible space, suitable for hosting a wide range of events. This is an ideal space to host a formal or more relaxed event.

We have a fully equipped professional kitchen offering a wide range of catering options, from canapes to hot buffets, or drink receptions.

Includes:

- +Unlimited refreshments (tea/coffee/water)
- +Full AV equipment
- +On-site staff
- +Wi-Fi

Extras:

- +Catering
- +Security
- +Wardrobe
- +Special requirements

€2200+vat per booking
(available from 5pm)





Amenities

- ✔ Free super-fast Wi-Fi
- ✔ Plenty of natural daylight
- ✔ On-site support team
- ✔ Air-conditioned spaces
- ✔ Freshly ground coffee
- ✔ Meeting & Training rooms
- ✔ Bike storage
- ✔ Showers
- ✔ Still & sparkling water
- ✔ Phone booths for private conversations



Retail

Within 3 minutes' walk of Grafton Street, a prime shopping and dining location.

Restaurants

Surrounded by fine dining restaurants and an excellent choice of coffee shops and cafés. Dawson Street is a 1 minute stroll and renowned for its fashionable bars.

Transport

All of Dublin's transport links are close by, including both the red and green Luas tram lines. Dublin bike stations and numerous bus stops are on the doorstep and the Dart Railway (Pearse Station) is a ten minute walk.



Grafton Street



Luas Red Line Tram



Local restaurants

Catering

Our Menus are seasonal and supplied by KC Peaches, a high quality, reliable caterer that offers a wide range of options, suitable for all dietary requirements. To find out more, please request our full menu.





Local Occupiers

- 1.KPMG
- 2.Davy
- 3.Sigmar Recruitment
- 4.Twitter
- 5.HedgeServ
6. Escher Group
- 7.Aercap
8. Permanent TSB
9. New Relic
- 10.Intercom
- 11.Maples FS
- 12.Indeed

Lifestyle

- 13.St. Stephen's Green
14. Fitzwilliam Square
15. Merrion Square
16. Grafton Street
17. Powerscourt Centre
- 18.George's Street Arcade
- 19.Duke Street
20. Fade Street
21. South William Street
22. The Spa at the Shelbourne
23. Wicklow Street
24. South King Street

Cultural

25. The National Gallery
26. National Museum
27. The National Library
28. Dublin Castle
- 29.Mansion House
- 30.Trinity College Dublin
- 31.Science Gallery
32. Royal College of Physicians
- 33.Gaiety Theatre
34. The Douglas Hyde Gallery

Hotels

35. The Shelbourne
36. The Merrion
- 37.Buswells
- 38.The Westbury
- 39.Cliff Townhouse
- 40.O'Callaghans

Restaurants

41. Avoca Café
42. KC Peaches
43. One Pico
- 44.Carluccio's
- 45.Fire
46. Pearl Brasserie
47. The Greenhouse
48. Patrick Guilbaud
- 49.L'Ecrivain
50. Marco Pierre White
51. Ely Wine Bar
- 52.Peploe's
53. Fallon & Byrne
54. Shanahan's on the Green

Bars and Nightlife

55. 37 Dawson Street
56. Sams Bar
57. Café en Seine
- 58.Kehoes
59. The Bailey
- 60.O'Donoghues
61. Doheny and Nesbitt
- 62.Toners

Dublin Bikes
1 min walk

Air Coach
1 min walk

Taxi Rank
1 min walk

Luas Tram
2 min walk

**Dart
Pearse St**
10 min walk

Dublin Airport
20 min drive

**Multi Story
Car Park**
On doorstep

Contact

5 School House Lane East, Dublin 2

+353 (1) 529 4100

teamdublin@usandco.com

